

The logo icon is a stylized, three-dimensional representation of a wardrobe door or a walk-in closet entrance. It features a central rectangular opening with a thick, metallic-looking frame. The frame has a slight 3D effect with shadows and highlights, giving it a modern, architectural feel.

Walk in Wardrobes

Bespoke Furniture For Any Space
2024

- **Wardrobes & Bedrooms**
- **Recent Work**
- **Home Office & Living Space**
- **Media Walls & Cabinets**
- **Client Feedback**
- **The Walk in Wardrobes Experience**

Bespoke Furniture For Any Space

Don't Settle For Ordinary

Welcome to Walk in Wardrobes, where design meets individuality. I'm Stephen Tombs, the visionary behind our bespoke creations, and I'm delighted to share how we can redefine your living space.

COMPLETELY BESPOKE

Embark on a journey with our expertly designed and custom-crafted walk-in wardrobes and furniture. From traditional hinged and sliding door styles to our innovative cantilever system, we offer endless flexibility and bespoke wardrobe and furniture options tailored for any space.

THE PERSONAL TOUCH

At Walk in Wardrobes, you're not just a client; you're a collaborator in the creation of furniture designed exclusively for you. Our philosophy is grounded in individualisation, acknowledging the unique character of each home and client. With over 25 years of experience, I ensure a level of personalisation and attention to detail that larger chains may struggle to achieve.

From the initial design phase to the finished product, I personally oversee every step of the process, guaranteeing a unique piece crafted with passion and precision.

TRUSTED FOR 25 YEARS

Trust our small team of design and manufacturing specialists, with over 25 years of experience, to bring your dream furniture to life. Based in the heart of England, we serve clients both in the UK and internationally.

Upgrade your home today with our superior-quality materials and truly personalised service. Choose Walk in Wardrobes for an unparalleled blend of craftsmanship and individualised attention.



Stephen Tombs

Stephen Tombs
Founder & Head Designer



Exceeding Expectations for over 25 Years

With 25 years of dedicated experience, Walk in Wardrobes stands as a testament to craftsmanship, reliability, and a commitment to exceptional service. As a family-run business, we understand the significance of creating living spaces that reflect warmth and individuality. Choosing Walk in Wardrobes means choosing the expertise of a team that values your unique needs.

From the initial design concept to the final installation, our wealth of experience ensures that every piece we create is not just a product but a personalised statement for your home. Trust us to transform your living spaces into a harmonious blend of functionality and style.



The Personal Touch

End-to-End Involvement: Stephen is involved in every aspect, ensuring a seamless and stress-free experience from design to installation.

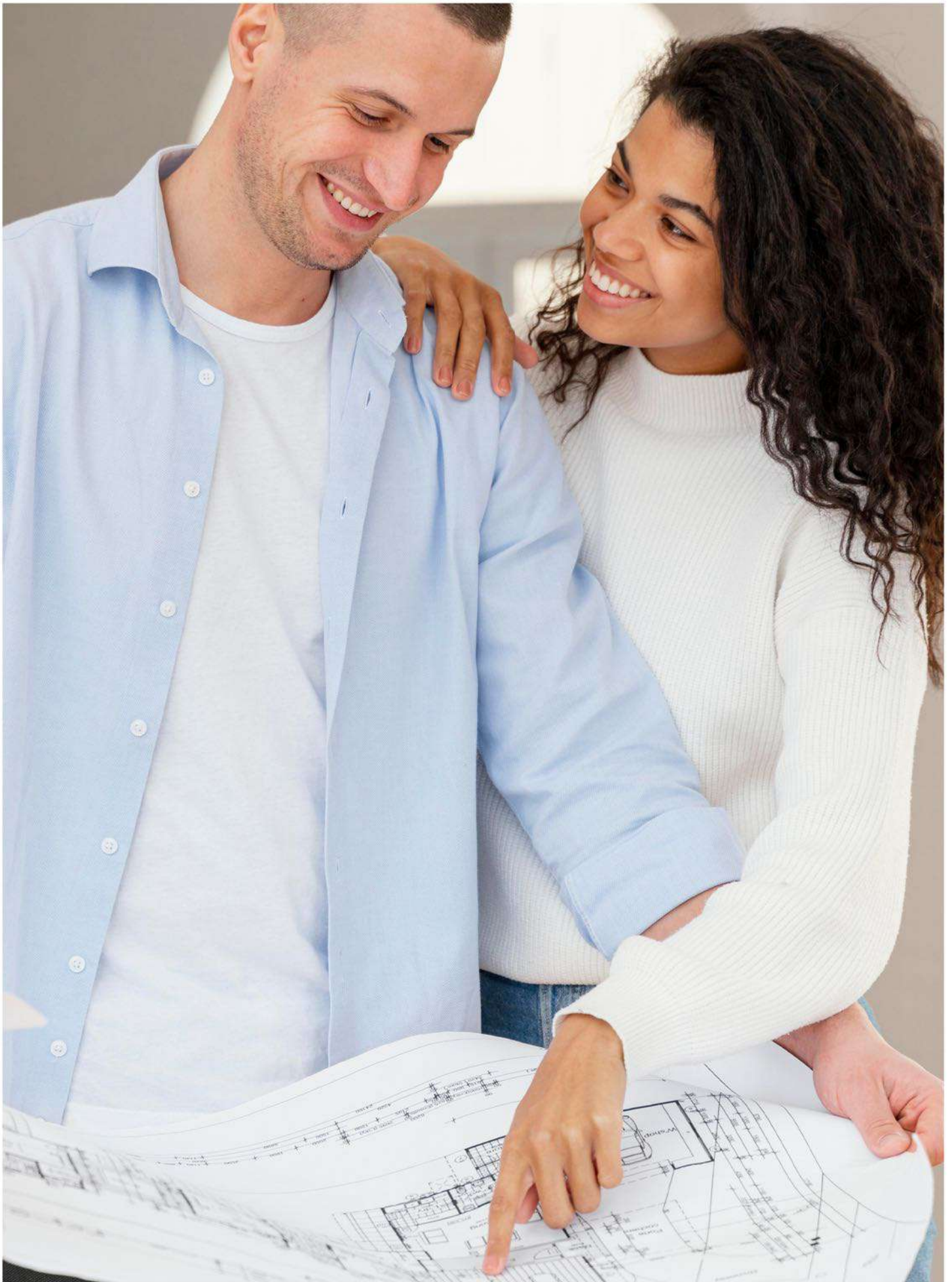
Attention to Detail: Our meticulous attention to detail, driven by years of experience, results in furniture that surpasses industry standards.

Versatility Beyond Wardrobes: While our name says wardrobes, we go beyond. From home offices and living spaces to bedrooms and media walls, our expertise extends to transforming every corner of your home.

UK-Based Workshops: All our items are designed, crafted, and dispatched from our UK workshops in Warwickshire, guaranteeing quality and supporting local craftsmanship.

Client Collaboration: Expect a collaborative approach, where your preferences and vision are central to the design process.

Post-Installation Support: Our commitment extends beyond installation; we provide ongoing support to ensure your satisfaction.



Hand Crafted Exclusively for you

At Walk in Wardrobes, we take pride in the artistry that goes into creating each piece of furniture exclusively for you. Our skilled craftsmen, driven by a commitment to excellence, blend traditional techniques with modern precision to bring your vision to life. Every detail, from the carefully chosen materials to the meticulous handcrafting process, reflects our dedication to delivering not just furniture but a bespoke experience tailored to your unique taste and lifestyle. With Walk in Wardrobes, your space is transformed, and each piece tells a story of craftsmanship, passion, and your individuality.



Wardrobes & Bedrooms

Imagine the convenience and luxury of having all of your clothing and accessories perfectly organised and easily accessible at your fingertips. Not only will this transformation enhance the aesthetics of your space, but it will also simplify your daily routine and bring a sense of calm and order to your life.

Our custom-designed walk-in wardrobes, wardrobes, dressing rooms and bedroom furniture are not just a functional storage solution, but a true work of art. Whether you have a large master bedroom suite or a small spare room, our team of experts will work with you to create a space that is tailored to your unique needs and personal style.



Case Study: Dream Space Comes to Life

Crafting a glamorous master dressing room

THE BRIEF:

Beyond the desire for a glamorous haven, the clients envisioned a space that was not only functional but also showcased their extensive collection of handbags, shoes, and accessories. The addition of an island became a crucial element, offering both a focal point and additional storage. The colour scheme, a blend of creamy neutrals and rich gold accents, was chosen to complement their taste for timeless elegance while creating a harmonious backdrop for their cherished possessions.

WORKING WITH THE CLIENT:

Our collaborative design journey commenced with a meticulous measurement of the space, ensuring accuracy in every detail. Understanding how the clients would use their dressing room was pivotal. Through in-depth discussions, we discovered their need for a dedicated dressing table, a space where the couple could comfortably prepare for the day ahead. The addition of the dressing table became an integral part of the design, providing a practical yet elegant solution.

To further grasp the aesthetic preferences of the clients, they shared images of spaces and elements that inspired them. This exchange of ideas allowed us to refine our vision and incorporate design elements that resonated with their sense of style. The amalgamation of accurate measurements, an understanding of their functional needs, and inspiration from their preferred aesthetics laid the foundation for a truly bespoke design tailored to their unique lifestyle.

The design process was enriched by this collaborative approach, ensuring that the final space not only met their practical requirements but also reflected the clients' personal style and aspirations.

LOCATION:

West Hallam, Derbyshire



Watch
the Video

Click here to
see the finished
Dressing Room



REQUEST YOUR FREE DESIGN CONSULTATION - 02477 675 071

MATERIAL CHOICES:

Careful consideration went into selecting materials that would not only elevate the room's aesthetic but also provide practical solutions. Luxurious cream tones, complemented by gold accents in fixtures and fittings, set the scene. The bespoke cabinetry, crafted from premium materials, was extended to create an elegant island, offering both storage and a dedicated space for showcasing their curated collection of handbags and accessories.

THE DETAILS:

Every detail of the dressing room was planned to align with the client's vision. The island, crafted to perfection, became a focal point for both storage and a tasteful display of their accessories accented with a delicate LED

feature strip at each end. LED framed floating mirrors, and custom lighting fixtures added layers of refinement. Perfectly set sockets for hairdryers and straighteners, finish the look for the perfect setting to begin the day or prepare for a night out.

DESIGN ADVICE FROM STEPHEN

"Don't underestimate the potential of a small dressing room. With the right design touches and the magic of mirrors and lighting, even the tiniest spaces can radiate stunning elegance."

Stephen, Head Designer
at Walk in Wardrobes







Client Q&A

Q: WHY DID YOU CHOOSE WALK IN WARDROBES?

A: Selecting Walk in Wardrobes was a natural choice as we sought a furniture maker who could deliver on our vision for a truly bespoke space. Their reputation for craftsmanship and attention to detail, coupled with a commitment to understanding and incorporating our specific desires, made them the perfect choice.

Q: WHAT INSPIRED YOUR DESIGN CHOICES FOR YOUR DRESSING ROOM?

A: The inspiration for this dressing room was drawn from my love for elegant things with a modern twist. I wanted a space that mirrors my lifestyle, creating a sanctuary that feels both sophisticated and functional.

Q: WHAT IS YOUR FAVOURITE PART OF THE ROOM?

A: My absolute favourite is the island. It's not just a practical addition; it's a style statement. Being able to display my collection of handbags and accessories there adds a personal touch of glamour, making it the standout feature that reflects my taste and lifestyle.

Q: WHAT ADVICE CAN YOU GIVE TO ANYONE THINKING OF USING WALK IN WARDROBES?

A: My advice would be to communicate openly about your vision and preferences. Walk in Wardrobes has a knack for turning ideas into reality. The more they understand your lifestyle and tastes, the more amazing the end result will be.





Designing Statements in Every Space, Big or Small

At Walk in Wardrobes, we believe that every space, regardless of its size or unique features, holds the potential for extraordinary design. Whether you have a compact room, a sprawling bedroom, or one with sloped ceilings, our expertise lies in transforming any space into a statement of beauty and functionality. Our designs are not confined by dimensions; instead, they are tailored to enhance the distinct character of each space, making a bold statement that speaks to your style. With us, your room's size is not a limitation but an opportunity for creative brilliance and unparalleled craftsmanship.







Sleep, Dress, Impress: Crafting Comfortable Personal Spaces

We lead in design trends, prioritising quality and, meeting our clients' needs.

We're all about personalisation and genuine care, ensuring each detail reflects your unique style.





DESIGN ADVICE FROM STEPHEN

"Our glazed slim frame doors add style, sophistication, and space in one elegant solution. Showcasing your treasures like shoes and bags with a touch of modern flair "

Stephen, Head Designer
at Walk in Wardrobes





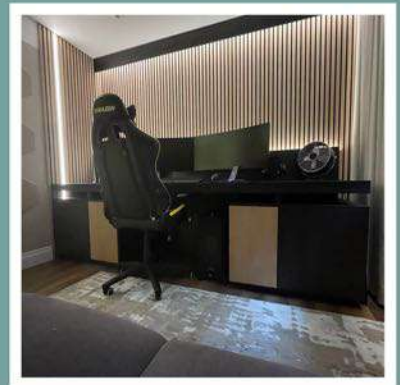
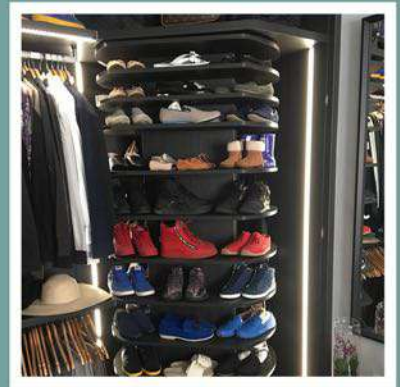
Classic Meets Contemporary: Timeless Style for Modern Living

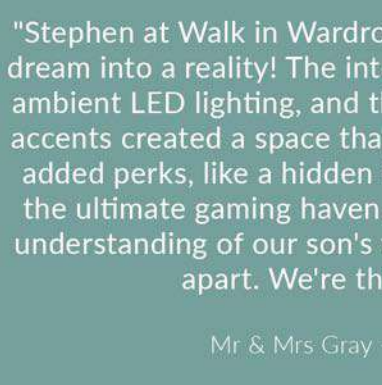
Timeless style for modern living, where traditional elegance meets sleek, functional design. Welcome to a space that effortlessly blends the best of both worlds, designed for the way you live.



Your Lifestyle, Your Bespoke Design

Our bespoke designs transform your everyday spaces into tailored masterpieces. From wardrobes reflecting your unique style to media walls for immersive entertainment, home offices seamlessly blending functionality and elegance, and bars designed for social moments, each creation is a reflection of your lifestyle. Join people just like you and work with us to bring your ideas to life.





"Stephen at Walk in Wardrobes turned our son's gaming room dream into a reality! The integrated storage for the gaming PC, ambient LED lighting, and the sleek dark wood finish with oak accents created a space that's both functional and stylish. The added perks, like a hidden fridge and soundproofing, make it the ultimate gaming haven. Stephen's attention to detail and understanding of our son's vision truly set Walk in Wardrobes apart. We're thrilled with the result!"

Mr & Mrs Gray - Burbage, Leicestershire



Home Office & Living Space

Immerse yourself in a world of style and practicality tailored exclusively for you. Our bespoke home office, studies, and living space solutions seamlessly fuse form and functionality, ensuring that every corner is a reflection of your unique taste and lifestyle.

From meticulously designed workspaces to cozy living areas, our expert team collaborates closely with you, transforming your vision into a personalised haven. Elevate your daily experience with a touch of sophistication and a dash of functionality in every bespoke detail.



Case Study: Fusion of Fun and Function

Crafting the Ultimate Gaming Haven for a Teenager

THE BRIEF:

Our task was to design and build a gaming room that would not only meet the functional needs of a teenager but also reflect their personality and style. The key elements were to incorporate dark woods and oak for a sophisticated aesthetic, integrate LED lighting for a gaming ambiance, include a fridge for convenience, create a vented cabinet for the gaming PC, install soundproof wall cladding for an immersive experience, and add an LED pelmet for curtains to complete the room's visual appeal.

WORKING WITH THE CLIENT:

Collaborating closely with our young client, we delved into their vision for the ultimate gaming sanctuary. Understanding their preferences, usage patterns, and aspirations allowed us to tailor the design to align with their lifestyle. Regular consultations ensured that the client's input was seamlessly integrated, making them an active participant in the creative process.

To deepen our understanding of the clients' aesthetic preferences, they shared images of spaces and elements that inspired them. This exchange of ideas enabled us to refine our vision and incorporate design elements that resonated with their sense of style. The combination of precise measurements, an appreciation of their functional needs, and inspiration from their preferred aesthetics formed the basis for a genuinely bespoke design tailored to their unique lifestyle.

This collaborative approach enriched the design process, guaranteeing that the final space not only fulfilled their practical requirements but also mirrored the clients' personal style and aspirations.

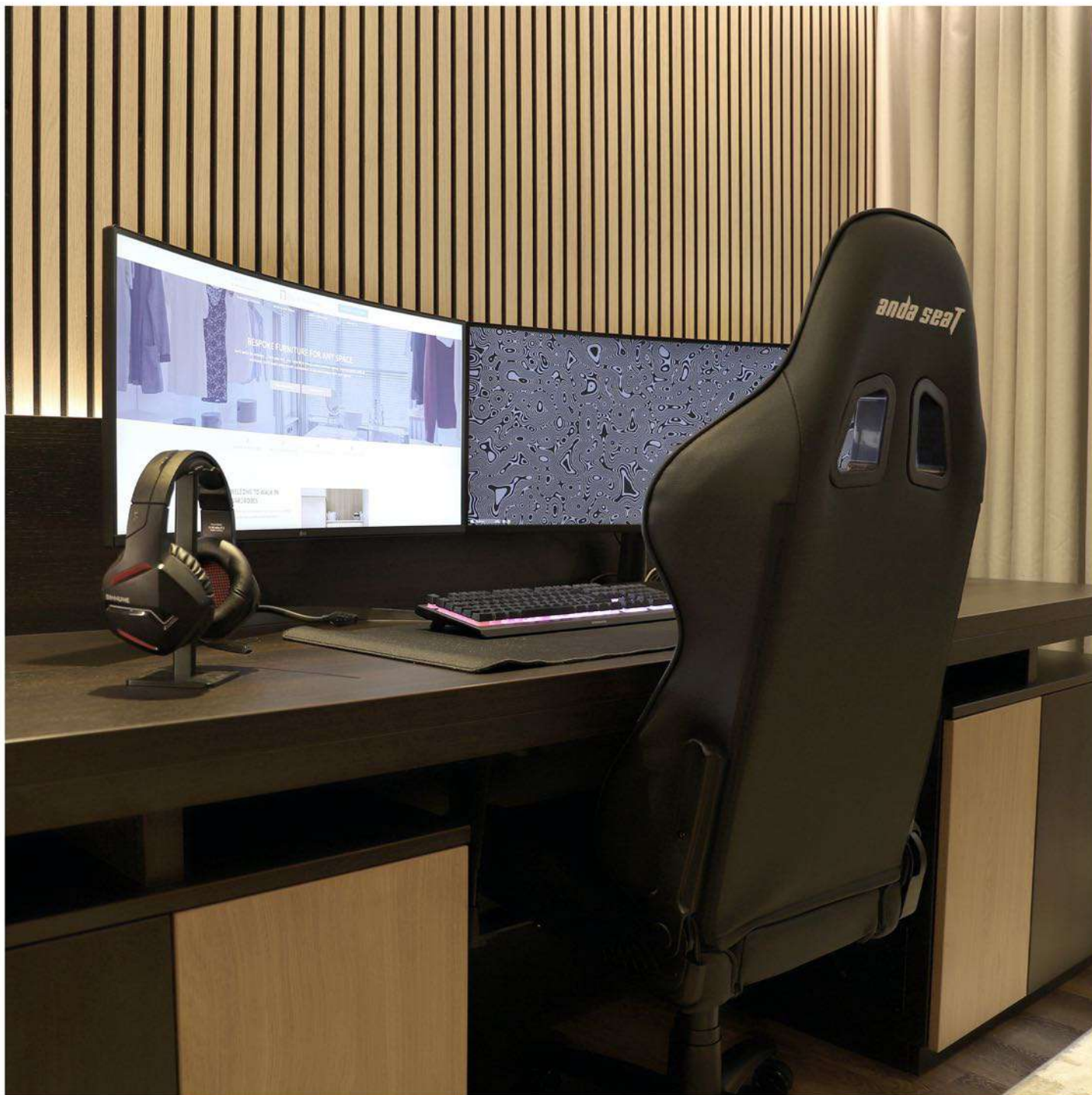
LOCATION:

Burbage, Leicestershire



Watch
the Video

Click here to
see the finished
Gaming Room



REQUEST YOUR FREE DESIGN CONSULTATION - 02477 675 071

MATERIAL CHOICES:

To bring the envisioned gaming haven to life, we opted for a combination of dark woods and oaks. These materials not only added a touch of elegance but also provided the durability required for a high-traffic gaming space. The juxtaposition of the dark woods and oaks created a visually striking and contemporary look, setting the foundation for the room's overall design. Using this combination took gave the room a mature yet fun feel.

THE DETAILS:

The success of the project lay in the meticulous attention to detail. LED lighting was strategically placed to enhance the gaming atmosphere, the fridge was seamlessly integrated into the design for easy access, and the vented PC cabinet ensured optimal

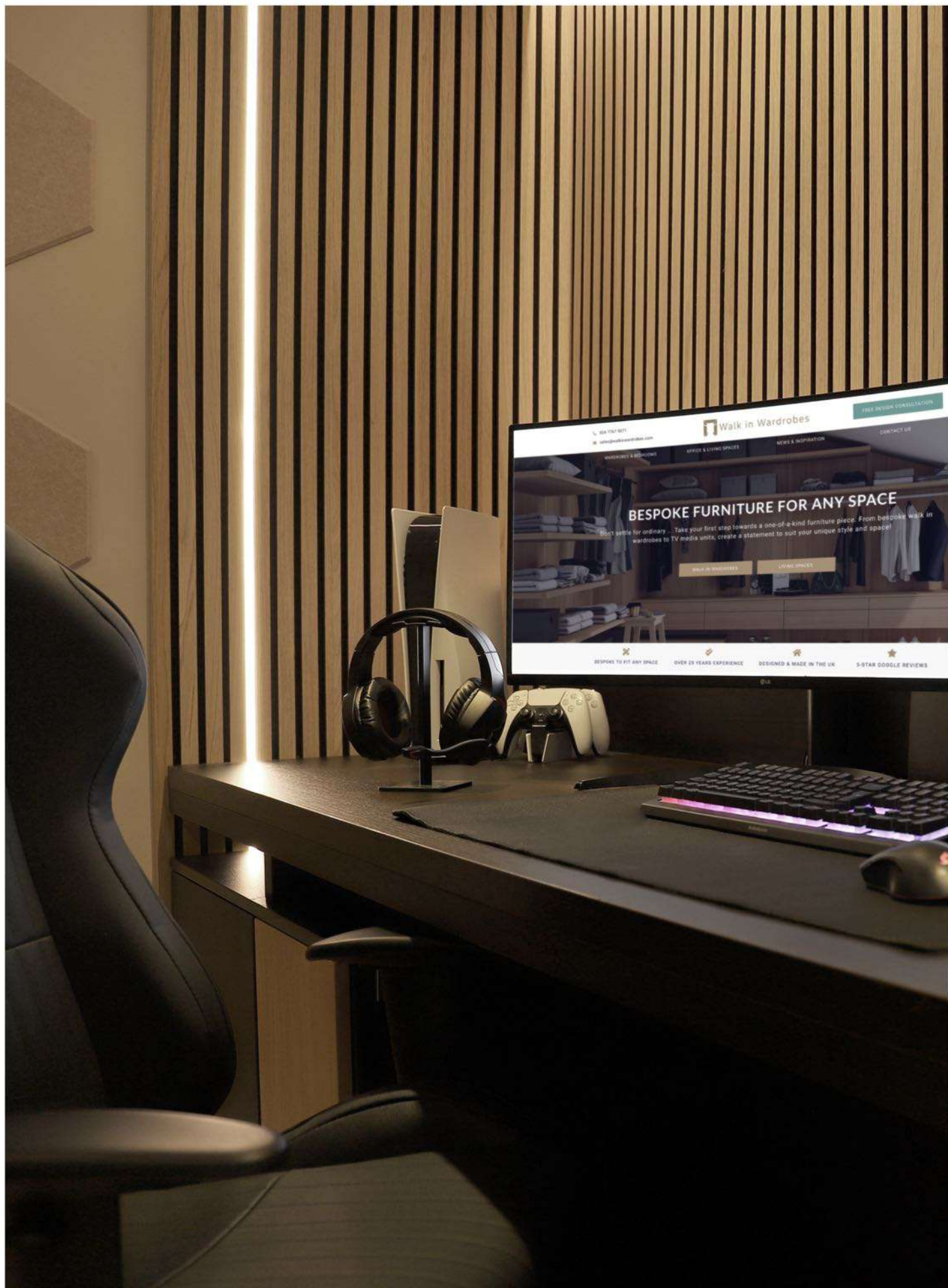
performance. Soundproof wall cladding was carefully installed to guarantee an immersive gaming experience without disturbing the rest of the household. The LED pelmet for curtains not only added a finishing touch but also provided versatility in adjusting the room's lighting according to the time of day.

DESIGN ADVICE FROM STEPHEN

"Enhance your gaming, vlogging, or podcasting space by prioritising strategic soundproofing back panels. This can deliver a pristine audio environment ensures your creative pursuits are uninterrupted and thrive with crystal-clear precision."

Stephen, Head Designer
at Walk in Wardrobes







Client Q&A

Q: WHY DID YOU CHOOSE WALK IN WARDROBES?

Parents: We chose Walk In Wardrobes because we had previously had a dressing room installed by Stephen and his team. Having previously worked with Stephen we knew he could capture our son's vision for his gaming room and work closely with him to create something truly unique.

Q: WHAT INSPIRED YOUR DESIGN CHOICES FOR YOUR GAMING ROOM?

Teenager: I wanted a space that was sleek and techy but also cozy. The dark woods and oaks gave it a mature feel, and the LED lighting was inspired by gaming setups I'd seen online. It was important to have a room that felt like my own gaming haven.

Q: WHAT ADVICE CAN YOU GIVE TO ANYONE THINKING OF USING WALK IN WARDROBES?

Parents: Don't hesitate to share your ideas, no matter how unique. Walk In Wardrobes not only listened to our son's wishes but also added valuable input to make the design even better.

Teenager: Yeah, and don't be afraid to go for something different. They really know how to make your ideas come to life, and it's way cooler having a room that's unique to you.

This gaming room project has been an absolute success, thanks to the collaborative efforts between Walk In Wardrobes and our son. It's a space that perfectly aligns with his personality and passion for gaming.



Functional Beauty: The Magic of Open Shelving & Concealed Storage

The ideal fusion of open shelving and closed cupboards in our home office designs. From ample desk space to concealed cable management, our designs seamlessly combine aesthetics with functionality. Enjoy a clutter-free and stylish workspace that complements your work flow and personal taste.





Sleek and minimalist designs for a modern touch to classic and traditional sophisticated styles, we can customise your home office or study space according to your preferences. We ensure that your office space is not just functional but reflects your unique style.







From chic book shelves in a reading nook, sleek storage that greet your guests to discreet cupboards that house your daily essentials, we craft functional yet beautiful storage for your living spaces, hallway or boot room to compliment the way you live.







From open shelving for a modern, accessible display to closed cupboards for preserving cherished items, we create a harmonious balance that seamlessly integrates with your home's aesthetic while ensuring your treasured books and ornaments find their perfect place.





Media Walls & Cabinets

Embark on a personalised journey of style and convenience with our bespoke media wall solutions. Crafted exclusively for you, our designs seamlessly blend sleek form and practicality.

From meticulously crafted storage units to ingenious hidden cable management, we create a tailored haven for your flat-screen TV. Elevate your daily viewing experience with bespoke details, LED feature lightings, and a touch of functional elegance in every corner of your media wall.







Media Mastery: Bespoke Solutions for Any Room Size

In the world of media walls, we genuinely believe that every nook, cranny, or quirky feature in your space is an opportunity for something extraordinary. Whether your room is snug, sprawling, or has those charming sloped ceilings, we specialise in turning each dimension into a delightful mix of beauty and practicality.

Our designs go beyond measurements; they're all about bringing out the unique charm of your space, creating a bold story that aligns with your personal style. With us, room sizes aren't limits; they're chances for creative brilliance and top-notch craftsmanship.



Tailored to your unique style and storage needs, our creations elevate the viewing experience while adding a touch of sophistication to your home. Let us design a media solution that seamlessly blends with your decor, ensuring a stylish, and immersive entertainment zone.







Integrate functional cupboards and shelves, providing ample storage for media accessories and creating a stylish focal point. Enhanced by vibrant LED features, this combination optimises your viewing experience and adds a touch of contemporary flair to your living area.





Client Feedback: Authentic Testimonials, Genuine Satisfaction

We take immense pride in sharing authentic testimonials about the experiences of those who have welcomed our bespoke designs into their homes. These stories are more than just reviews; they are a testament to the genuine connections we forge with our clients and the pride we take in delivering amazing furniture & service.

"Outstanding customer communication, workmanship, design and quality materials. Since first meeting with Steve we were confident in his knowledge that he would come up with the good, and wow has he! Very good design, understood our requirements, and his team of two fitters could not have been tidier, polite or efficient in fitting in two days only! Exceptional service well recommended."



"We first met Stephen at grand designs NEC many years ago and kept a note of their details. So pleased we did! By appointment we recently visited their factory/showroom and Stephen was so helpful and accommodating. He created a design for our challenging shape of walk in wardrobe. The quality is superb and they look brilliant. They also came up with a solution for an invisible entrance door which looks like a full size mirror and secretly opens. I can't recommend these guys enough. Nothing was too much trouble and the cost fitted was more competitive than the larger national chains quoted us."



"Great work by Steve and the team! Started off with just fitting a luxury walk in wardrobe, but soon followed with the vast majority of the entire house being refitted, including a bespoke tailored made gym. Steve is a pleasure to work with, and always goes over and above to meet the clients needs. Pleased to say we have found a trusted supplier of high end fittings, and which we are happy to recommend to our friends and family! Thanks again to Steve and Walk in Wardrobes :-)"



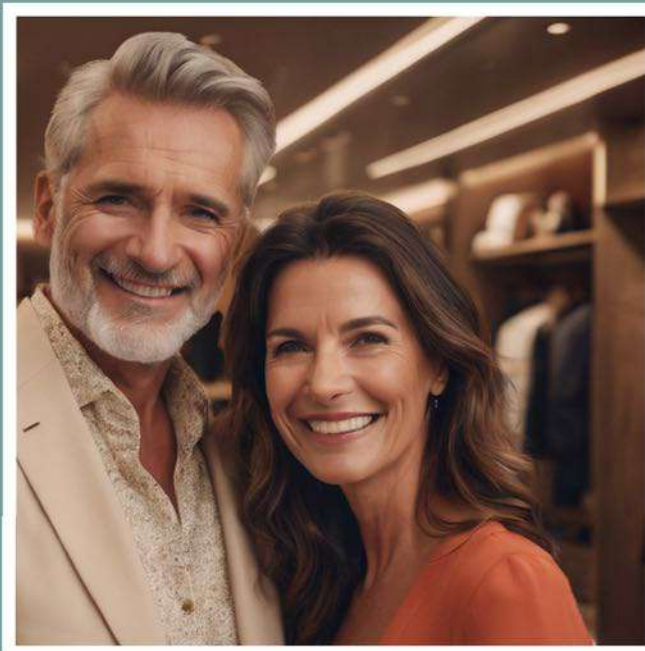
"Outstanding. Steve and the team are the best contractors we have used in over 200 who have contributed to our house build. First fell in love with their furniture at Grand Designs - before our groundworks were complete(!) Several years later Steve has completed multiple different rooms for us and we are thrilled with the results. No hesitation in recommending."



"We've used Stephen and his team twice now and have been delighted with the end results. The quality of the work and the materials is very high. Stephen's advice throughout the process was excellent. He really listened to what we needed and came up with some creative ideas when we were in need of some inspiration. When we moved house recently the wardrobes looked just as good as the day they were fitted 10+ years ago so we know its an investment that will strand the test of time. As a result he was first on our list to call for our new home. First class from start to finish and the end product definitely has the wow factor."



"We used Steve and his team after a recommendation from a friend and we were not disappointed. Steve's knowledge is second to none and his team were fantastic. The quality of the product is five star! I would highly recommend to anyone looking for a walk in wardrobe or home office"



"From the moment we met Stephen at his showroom in Coventry, we felt a connection. His passion for his craft and genuine interest in our vision made the entire process not just smooth but enjoyable. The attention to detail, quality of materials is all top-notch. But beyond that, what sets Stephen and his team apart is the personal touch. Stephen's friendly nature and professionalism turned what could have been a project into a fun and creative experience. We can't thank Stephen and his incredible team enough!"

Roberto & Sophia Falconi
Solihull



The Walk in Wardrobes Experience

Don't Settle For Ordinary

INTRODUCTION

It begins the moment you make that initial contact. Whether you dream of a decadent walk-in wardrobe or a sophisticated home office, Stephen personally guides you through a tailored experience, understanding your needs, preferences, and aspirations.

DESIGN & PLANNING

In the Design & Planning phase, creativity knows no bounds. Stephen's expertise transforms your ideas into tangible designs. Your space is meticulously planned, ensuring every inch aligns with your vision. The process is a dialogue, a partnership where your input shapes the final masterpiece. Forget the generic blueprints; this is about crafting a space that's that's a genuine reflection of you.

PROJECT MANAGEMENT

Stephen oversees every detail, ensuring the project stays true to the design. From sourcing materials to coordinating his team of craftsmen, this is where Walk in Wardrobes sets itself apart from the rest.

MANUFACTURE

Nestled in the heart of Coventry, our manufacturing process is a testament to precision and craftsmanship. Led by Stephen's 25 years of expertise, our skilled team meticulously craft each element of your bespoke creation. Quality is not just maintained; it's enhanced. Your bespoke piece is more than furniture; it's the result of a keen eye for detail and a commitment to unparalleled craftsmanship.

INSTALLATION

Installation is a moment of transformation. Stephen's hands-on approach ensures your space is brought to life exactly as envisioned. No outsourcing, no compromise. From intricacies to finishing touches, the installation is the culmination of a collaborative effort, ensuring your bespoke creation seamlessly integrates into your home.

SERVICE

The Walk in Wardrobes Experience doesn't end at installation; it extends to a commitment of enduring service. Whether it's future tweaks or expanding your bespoke collection, the service is as personal and attentive as the initial consultation. Your satisfaction is not just a goal; it's our ongoing promise. Don't settle for ordinary; choose an experience as unique as you are.



Showroom & Head Office
18 Brindley Road
Bayton Road Industrial Estate
Coventry, CV7 9EP

02477 675 071 | sales@walkinwardrobes.com

